

LEIGHTON-LINSLADE TOWN COUNCIL

ANNUAL REPORT

2010-2011



Leighton-Linslade Town Council
The White House, Hockliffe Street
Leighton Buzzard, Bedfordshire LU7 1HD

Telephone : 01525 631920
Fax : 01525 853073
e-mail : info@leightonlinslade-tc.gov.uk
website : www.leightonlinslade-tc.gov.uk



I N D E X

	Page No.
Foreword by Councillor B Sadler	3
Foreword by Pat Kingsnorth, Town Clerk	4
Introduction	5
Policy and Finance Committee	7
Leisure and Community Committee	13
Planning Committee	19
Sustainable Transport Committee	20
Town Development Committee	22
Appendices	
Appendix 1	25
Appendix 2	26
Appendix 3	27
Appendix 4	28

Foreword by Councillor Brian Sadler



This is the fourth Annual Report of this Council's administration. The past year has seen a coalition government working to reduce the national debt through prudent savings and inevitable cuts. With this in mind, and the inevitable hardships it has brought to many of our residents, we have strived even harder to achieve value for money efficiency savings. This has, for the fourth year in succession, enabled us to build healthy reserves and reduce the council tax down to 1.69% in 2010-2011 and a planned zero% increase for 2011-2012.

It is still very much our policy to engage with the residents and openly invite them to attend Council meetings and functions. This enables concerns and problems to be addressed and valuable feedback given to address potential future problems.

We are proud of our continued strong links with our local police force and welcome their presence at our committees and functions. Many foot patrols are seen interacting with the public, especially on market days, and we are informed that this encourages valuable feedback. Operation Dodford, the out-of-hours policing operation, continues to be financed by the Town Council and has resulted in cautions and arrests for anti-social behaviour, vandalism and burglary.

Like all principal authorities throughout the UK, Central Bedfordshire Council (CBC) is suffering from the economic restraint. But our strong links with CBC continues, and their co-operation in many of our local issues such as leisure and health facilities, as well as business and employment regeneration, is greatly appreciated. We are currently discussing with CBC the feasibility of devolving various services to the Town Council that would be of mutual benefit to both authorities. A top priority for the Town Council is, in cooperation with our GP practices, CBC and support of our Member of Parliament, Andrew Selous, bringing to fruition decades of striving for a local community hospital.

We are acutely aware of proposed housing developments within the town, and have continued to reassure residents that we will scrutinise all new development plans to assess whether they comply with acceptable and sustainable infrastructure requirements. The Town Council opposed the 'West Linslade Housing Development' which entailed proposals for building 900 homes.

The toilets and paddling pool in Parson's Close have both suffered extensive vandalism damage over the past few years which, unfortunately, necessitated their closure. During 2009-2010 we started work on planning for a new 'Splash and Play' area. In January 2011, work started on the new facilities with, weather permitting, completion by the end of March ready for the summer season.

The Council continues with its Honorary Burgess scheme in recognition of individuals who have given large amounts of their time on a voluntary basis in service to the community. In 2010-2011, Alan White, Tony Birch and Fay Barrett were our Honorary Burgesses.

Finally, on behalf of the Councillors, we would like to thank the Town Clerk and all her staff for their much valued help and support, both on the front line and behind the scenes - particularly with outside functions such as the Canal Festival, Living History Day and Britain in Bloom. In the latter event, we are proud that the town's display gained a silver award - a worthy prize for a first attempt. So, a big thank you to all the residents, councillors and council staff who helped to make this possible.

Foreword by Pat Kingsnorth, Town Clerk



On looking back over the last year, Leighton-Linslade has a lot to be proud of in our community. The Town Council's free of charge public events such as the Canal Festival and Living History Day continue to be as popular as ever – the numbers attending the Canal Festival this year broke all previous records.

Leighton Buzzard and Linslade entered Anglia in Bloom. This was a huge challenge for a small Council with two large towns. However, with the enormous help and commitment of many members of the public, we were successful in achieving a Silver Award.

Our new website was launched in 2010 and we have worked hard on this to provide you with access to more information and to make it simpler for you to find your way around. If you haven't visited it yet, please give it a try at www.leightonlinslade-tc.gov.uk

Throughout the year, we have been steadily working our way through updating the community Big Plan. Several public meetings were held and the Big Plan II will be published by the end of March 2011.

Planning development briefs are being prepared on the area to the south side of the High Street and the land south of Leighton Road between the canal and river (Bridge Meadows). These are two large sites which are vital to how our town develops in the years to come and could result in major enhancements.

As would be expected in the current economic climate, ongoing change and service improvement to achieve value for money has been very much in focus over the last year. Overall, considerable costs savings have been achieved, particularly in administration, without a reduction in service provision.



INTRODUCTION

Leighton-Linslade is the largest town situated in the administrative area of Central Bedfordshire Council.

Historically, Leighton Buzzard has always been within Bedfordshire, with the area of Linslade transferring from Buckinghamshire in 1965. The Town Council came into existence on 1 April 1974 with the powers of a parish council. The parish has an estimated population of just under 40,000.

The Council comprises of 21 elected Councillors who each serve for a four-year term of office. The Town is divided into six wards - three wards returning three town councillors and three wards returning four town councillors. Current councillors are now in their final year of office and elections will be held on 5 May 2011.

Other than the Town Mayor, members are not paid any expenses or allowances. The only exception is the payment of travelling expenses for official duties outside the town. A list of current members of the Town Council is shown at Appendix 1.



Councillor Gordon Perham, Town Mayor

During 2010-2011 the business of the Council was conducted through five main Committees:

- Leisure and Community
- Planning
- Policy and Finance
- Sustainable Transport
- Town Development

The Sub-Committees reporting to each of these Committees are shown in Appendix 2.

This year the Town Centres Management Committee (a Joint Committee with Central Bedfordshire Council) met only twice, compared with four times in 2009-2010. A Town Centres Management Task and Finish Group was formed and this group discussed the possible options for best managing the town centres and working in partnership with Central Bedfordshire Council. A recommendation was made to the Town Council and to Central Bedfordshire Council to abolish both the existing Town Development Committee and the existing Town Centres Management Committee and to replace these with the Leighton-Linslade Partnership Committee. This new Committee will meet for the first time in June 2011 and it is hoped that a much closer working relationship will be established between the Town Council and Central Bedfordshire Council.

Attached as Appendix 3 is a calendar of meetings for 2010-2011.

The public and press can attend all meetings of the Council, its Committees and Sub-Committees, unless there is a special reason for exclusion.

At meetings of the Council, members of the public may ask questions of Councillors, provided three clear days' notice of the question has been given.

At meetings of the Council's Committees, members of the public may address the meeting, in relation to the business of the Council, for a total maximum period of fifteen minutes (but each person's question or statement must not exceed two minutes).

In the case of meetings of the Committee responsible for planning, questions or statements may be put by members of the public on individual planning applications during the discussion on such applications.

At 31 March 2011, the Council employed a team of 29 staff (15 full-time; 14 part-time) led by the Town Clerk, Pat Kingsnorth. A copy of the staff structure is given at Appendix 4.

Mission Statement

To develop services and local initiatives which improve the quality of life of the townspeople of Leighton Buzzard and Linslade.

Principal Aims

Leighton-Linslade Town Council will serve its community by :

- effectively delivering a range of public services - either directly or by supporting local organisations or other providers
- actively pursuing its representational role

Beliefs and Values

In carrying out its principal aims, the Council will be guided by the following principles:

- Integrity that it will always act impartially and will adopt a positive approach to resolving issues
- Commitment to consult widely and to listen to ideas
- Staff Development to work together with all sections of the community
- Financial Prudence to encourage and assist staff to reach their full potential
- Financial Prudence to promote a culture of continuous improvement
- Financial Prudence the concept of Value for Money
- Community Driven that it will always act in a responsive way to the needs of the community.

POLICY AND FINANCE COMMITTEE

The Committee comprised of eight Town Councillors and was chaired by Councillor Brian Sadler. Councillor David Hopkin was the Vice Chair. In the municipal year 2010–2011, the Committee met on five occasions.

One of the Committee's Objectives for 2010-2011 was to re-tender for health and safety consultants. This was successfully undertaken and the change in provider resulted in a cost saving as well as an increase in service.

The Policy and Finance Committee also reviewed several Council policies during the year, including the Whistle-Blowing policy, Mayoral Order of Precedence, Protocol for the Mayor, Protocol for the Group Leader and the Safeguarding Children and Young People policy.

A Task and Finish Group was formed to review the Council's existing Standing Orders and to approve changes in line with the new model guidelines issued by the National Association of Local Councils. Once final changes had been drafted, a recommendation was made to Council to adopt the revised Standing Orders.

The creation of a new website for the Town Council was agreed by the Policy and Finance Committee in September 2010. An opportunity had arisen to create a new website under "Project Involve", offered by Central Bedfordshire Council as a free service to Town and Parish Councils. It was the aim of the Town Council to create a more user-friendly site, whereby information could be accessed quickly and easily. The site is also much easier to maintain and it is, therefore, much simpler to keep the website right up-to-date. All sorts of information can be accessed via the new website including meeting agendas and minutes, community information and public notices such as road closures.

FINANCIAL REPORT

- The Accounts Sub-Committee continued approving expenditure and closely monitoring quarterly reports.
- The Annual Governance Report from the Audit Commission for the 2009-2010 gave an unqualified opinion on the financial statements.
- Internal audit reports were received on a regular basis and duly considered. No major issues were identified.
- Budgets were prepared and recommendations made for the 2011-2012 budget and precept.

Council Tax 2010-2011

The total Council Tax, paid by local residents, included the spending requirement for Central Bedfordshire Council, Bedfordshire Police Authority, Bedfordshire Fire Service and Leighton-Linslade Town Council. Central Bedfordshire Council was the authority responsible for collecting Council Tax on behalf of the other authorities. Leighton-Linslade Town Council received no financial support from Central Government, unlike Central Bedfordshire Council; nor does it receive funding from local businesses through the Non Domestic Rate. This is collected by the Central Bedfordshire Council on behalf of the Government and paid back to them in the form of a grant.

Leighton-Linslade Town Council is funded directly by local householders and from a small amount of income generated from services, such as the hire of sports pitches and other fees and charges. Each year the Town Council calculates the money that it needs to raise in order to continue to provide services. From this sum is deducted the likely income raised from activities, and any transfer from reserves to determine the amount that is needed to spend on the services in the year ahead. This sum is called the precept and is the amount

collected on our behalf by Central Bedfordshire Council as a proportion of the total Council Tax paid by Leighton-Linslade residents. For the year ending March 2011, our precept, expressed as an average Band 'D' house, rose by 1.69% from the previous year. If you lived in a band 'D' house, you would be contributing £114.78 to Leighton-Linslade Town Council in 2010-2011.

The Council is committed to ensuring that every penny of the Council Tax is spent prudently and the focus is on achieving the best possible value for money at all times.

Loans

At 31 March 2011, the Council had outstanding loans of £597,352.

Income

During 2010-2011, Central Bedfordshire Council (via the Cycle Town grant funding) continued to fund the cycling project in Leighton-Linslade. This funding ceased on 31 March 2011.

The Town Council received £100,000 in grants for the new Splash and Play amenity in Parson's Close Recreation Ground. £50,000 from Central Bedfordshire Council via the national Playbuilder project and a further £50,000 grant from WREN (Waste Recycling Environmental Limited).

As in 2009-2010, the economic situation of the country resulted in relatively low interest rates being achieved on the Council's balances. However, the Committee reviewed its funds and the Council is now achieving a higher rate of interest than in the previous financial year.

Smaller sources of income for the Council derived from services provided by the Council e.g. football pitches, sports pavilions, cemeteries and allotments.

Budget Comparison for the Year Ended 31 March 2011

The Council's policy is to estimate the total expenditure for the year, which may contain capital expenditure not financed via the precept. Any such expenditure of this type is included within the actual revenue expenditure for the year.

The budget out-turn is summarised below :

	Net Expenditure	Net Budget	Variance
DIRECT SERVICES TO THE PUBLIC			
Central Services to the Public	(13,980)	(25,900)	11,920
Community Projects	(31,915)	(41,160)	9,245
Grants and Donations	(35,485)	(43,488)	8,003
Tactic Youth Centre	(95,203)	(118,817)	23,614
Parks and Open Spaces	(276,658)	(335,953)	59,295
Community Services	(111,025)	(119,190)	8,165
Capital Projects	(101,230)	(188,000)	86,770
Use of Reserves	(77,122)		(77,122)

DEMOCRATIC, CIVIC AND CENTRAL COSTS

Corporate Management	(19,734)	(32,287)	12,553
Central Costs	(436,593)	(476,016)	39,423
The White House	(89,992)	(97,937)	7,945
Democratic Costs	(25,584)	(30,675)	5,091
Enhanced Pension	(4,292)	(4,500)	208
Other Costs and Income	1,504,838	1,463,601	41,237
Net surplus/(deficit)	186,026	(50,322)	236,348

The budget under spend is largely due from savings in central costs and projects which have not been carried out. Budgets for these projects have been earmarked and rolled forward to 2011-2012.

Grants

The Council assists a wide variety of local organisations with grants to enable them to function for the benefit of various sections of the community. This Sub-Committee receives and considers applications from local community organisations seeking funding. Payments totalling £38,739 have been made to these bodies during the year.

Guaranteed Grants are grants guaranteed for a period of time i.e. a four-year period which is related to the term of office of the elected Town Council members. They are set to commence in the second year of the term of office and are for amounts over £500. The first year of the current four-year period commenced in 2008-2009. The grants are index-linked for inflation.

During 2010-2011, Guaranteed Grants (for a four-year period) totalling £24,200 were made to the following organisations:

	2009-2010 Grant	2010-2011 Grant
Citizens' Advice Bureau	7,700	7,000
Voluntary and Community Action	2,400	2,400
Town Twinning Forum	550	550
Arts Forum	2,800	2,800
Carnival Committee	550	550
Sports Council	2,800	2,800
Greensand Trust	550	550
Senior Citizens' Association (LINK)	550	550
Pre-School Learning Alliance	550	550
Mayday Trust	550	550
Forataill	1,000	1,000
Access for All	500	No longer exists
Home-Start South	1,000	1,000
Buzzer Buses	2,400	2,400
St John Ambulance	500	500
Homeless Service	1,000	1,000
	£25,400	£24,200

General grants are made to a maximum of £500 per organisation. These grants are for the benefit of people and projects local to Leighton Buzzard and Linslade.

The scheme also provides start-up grants for new organisations to a maximum of £250 per organisation. In 2010-2011 start-up grants of £250 were awarded to the Town Bridge Mill Social Club and the Leighton-Linslade Street Pastors.

During 2010-2011, General Grants totalling £14,539 were awarded to the following organisations:

Organisation	Purpose	Amount £
Mentmore Road Under Fives	Play equipment	500
8 th Leighton Buzzard Brownies	Crafts/sleepover/outing	500
1 st Leighton Buzzard Rainbow Guides	Rainbows Get Healthy	500
All Saints Preservation Trust	Replacement of high level lamps	500
1 st Linslade Scouts	Purchase of kayak accessories	500
Linslade Community Hall	Continued refurbishment of hall	500
Meadow Way Community Assoc.	Purchase laptop & games	500
LB & District Archaeological & Historical Society	Publish a book about LB in the Civil War	500
Linslade Lower School Parents Association	Purchase new gym mats	470
Vale Speakers Club	Presentation equipment	500
The Willows Residents & Families Association	Purchase gazebo	450
Leighton Middle School Association	Multi-use external covered seating area	500
Friends of the Earth	Bus Information improvements	470
Bedfordshire & Luton MIND	Local arts & crafts programme	500
Friends of Knolls Wood	Provision of notice boards	500
Hockliffe Street Pre-School	Outside toys/games	500
L-L District Scout Council	Creation of memorial garden	250
LB & District NCT	Breastfeeding classes and Christmas activities	500
Linleighbridge District of Girlguiding	Minibus licence training and First Aid training for leaders	500
Reclaim Life	Training for life coaches	500
L-L Group Macmillan Cancer Support	Financial support to people suffering from cancer	500
Pages Park Youth Scheme	Winter activities for members	500
L-L Flower Club	Purchase of microphone	169
L-L District Woodcraft Folk	Subsidising cost of trip to Peak District	250
LB & District MENCAP	Music therapy day	480
Friends of Linslade Wood	Artwork design for notice boards and leaflets	500
LB Narrow Gauge Railway	Sandhills "Steamy Sunday"	500
4 th LB Guides	Camping tables & cookers, minibus hire, first aid training	500
Victim Support	Community service volunteer training	500

Town Bridge Mill Social Club	Subsidising cost of trips	250
L-L Street Pastors	Publicity, paying p/t co-ordinator, buying supplies	250
I♥LB group	Summer festival 2010 costs	500
		£14,539.00

For further information on our grants policy, please check our website on www.leightonlinlade-tc.gov.uk or contact The White House

OUR OBJECTIVES

During 2010-2011 the Policy and Finance Committee's objectives (as set out in the last Annual Report) are given below together with progress to the end of March 2011.

What we said we would achieve in 2010-2011	What we actually achieved
Continue to deliver community projects identified in the Big Plan and, where possible, move forward the Big Plan top ten projects.	<p>Following further extensive public consultation, the Big Plan has been reviewed and a new Plan (Big Plan II) produced for the period 2011-2017.</p> <p>Public consultation has taken place on plans developed by Central Bedfordshire Council for a waterside development (between the river and canal) and town centre expansion (on the south side of the High Street).</p> <p>Discussions have continued with NHS Bedfordshire regarding potential sites for a healthcare facility.</p> <p>The Town Council has continued to work closely with The Greensand Trust to secure and protect green spaces surrounding the town (e.g. Rushmere Park, Stanbridge County Wildlife Site).</p> <p>Considerable work has been undertaken in Parsons Close – including renovated flower beds, access to Clipstone Brook improved, more seating made available, the Skate Park refurbished and the old paddling pool replaced by a modern Splash and Play facility.</p> <p>Talks are still in hand to gain more sporting facilities, employment opportunities and appropriate infrastructure for the Parish. The Town Council has reiterated its long held position that an Eastern Link road is required to reduce traffic through the town centre.</p>
Seek greater devolution of powers and responsibility, with appropriate funding, from Central Bedfordshire Council.	Several meetings have been held with Central Bedfordshire Council to discuss devolution of services. Discussions will be continued into 2011-2012.
Re-tender for health and safety consultants.	<p>Quotations were received from three consultants, resulting in the appointment of a new consultancy for health and safety to replace the existing provider.</p> <p>A cost saving and an increase in services provided were achieved through the change in consultancy.</p>
Further improve the public image and perception by the public of the Town Council.	A new, more user-friendly website was developed in September/October 2010 as part of the "Project Involve" service offered by Central Bedfordshire Council. This was a free of charge facility and, therefore, resulted in a cost saving. The new website is easier to administrate and is kept up-to-date on a daily basis with the latest news,

	<p>community information and details of Council meetings, including agendas and minutes.</p> <p>The Council's quarterly newsletter News from the White House is now printed in colour and is much more widely available via news stands in key locations throughout the town.</p> <p>The public support for the Town's entry into Britain in Bloom has resulted in a high level of community involvement, reflecting positively on the Council. The Silver award was a great achievement for the Town.</p> <p>Quarterly meetings continued to take place with the local Parishes surrounding Leighton-Linslade.</p> <p>The Town Council continues to support the Federation of Residents and Tenants Association of Leighton-Linslade; the Licencees Forum; the Get on Track Campaign to improve facilities at the railway station and the I♥LB Group.</p>
Review the hiring arrangements for The White House.	<p>The free of charge use of the White House during working hours is now much more widely used by organisations such as The Greensand Trust, National Health Service (PCT), Cycling organisations, the Princes Trust, Residents Associations, Fairtrade and many other local groups. There has been a weekly use throughout the year by the Jobs Centre who have been helping the long term unemployed gain the skills required to re-enter the workplace.</p>
Continue to seek sources of grant funding to assist with the funding of new and existing initiatives.	<p>Funding was successfully obtained via Central Bedfordshire Council from The Playbuilder Fund and WREN (Waste Recycling Environmental Ltd) towards the new Splash and Play facility in Parson's Close.</p>
Review Council policies	<p>The following policies were reviewed :</p> <ul style="list-style-type: none"> • Mayoral Order of Precedence • Protocol for the Mayor • Protocol for the Leader • Safeguarding Children and Young People • Whistle-blowing policy <p>Policy reviews are ongoing and will continue. A new Employee Handbook was produced.</p>

During the year the Committee also :

- Established an Electoral Ward Boundary Sub-Committee to consider proposed changes to warding in Leighton-Linslade.
- Established a Standing Orders and Financial Regulations Sub-Committee to review the new model Standing Order guidelines issued by the National Association of Local Councils and to revise the existing Standing Orders accordingly.
- Established a Police Liaison Sub-Committee to monitor Operation Dodford and work more closely with the Police in the Parish.
- Established a Personnel Sub-Committee to provide support to the Town Clerk with regard to staffing matters, such as the creation of a new Employee Handbook.

LEISURE AND COMMUNITY COMMITTEE

The Committee comprised of eight Town Councillors and was chaired by Councillor Alan Brandham. Councillor Ken Sharer was the Vice Chair. In the municipal year 2010–2011, the Committee had met on five occasions.

PARKS AND OPEN SPACES



Leighton-Linslade Town Council is responsible for the maintenance and management of most of the towns' many parks and open spaces. This includes sixteen play and teenage areas, in twenty one neighbourhood parks, including Parson's Close, Pages Park and the Ouzel Valley Meadows.

One of the great achievements this year has been the progress with the Splash and Play facility in Parson's Close Recreation Ground. Following the appointment of a contractor, several design specifications were proposed and a public consultation event took place. The Town Council has fortunately been granted partial funding from Central Bedfordshire Council via the Playbuilder fund and has also been successful in obtaining a grant from WREN (Waste Recycling Environmental Limited). Construction work on site began in January 2011 with an anticipated opening date planned for April 2011.

2010-2011 saw the completion of the refurbishment and new play equipment in Vimy Road. Again, this was funded by Central Bedfordshire Council via the Playbuilder fund.

Our Parks have continued to be used for a wide variety of both Community and Town Council organised events. The Carnival, Funfairs, Narrow Gauge Railways events, Summer Sports Camps and activities by local pressure groups such as L.O.U.D and Fairtrade Leighton-Linslade have all taken place in our parks.

SPORTS FACILITIES

The Council is responsible for ten football pitches (including junior pitches), three croquet lawns, one tennis court, one basket ball court and two cricket tables.

The Council has considered the necessity to upgrade its sports pavilions, as well as providing new sports facilities at Astral Park. Work on the production of master plans for Pages Park, Pages Field and Mentmore Road commenced and interested stake holders have been consulted. The next stage will be a period of public consultation in Summer 2011.

Central Bedfordshire Council is continuing to plan improved facilities at Astral Park and Pratt's Quarry.

ANGLIA IN BLOOM

Anglia in Bloom 2010

2010 was the first year that the Town Council entered the parish of Leighton-Linslade in to Anglia in Bloom, the Eastern Region's Premier Horticultural and Environmental Campaign. Apart from encouraging the community to work together to enhance and improve local areas, it was hoped that the projects would also create a sense of civic pride. This has no doubt been achieved!

Members of the community formed a steering group and approached the campaign with much enthusiasm. The Town Council supported the campaign not only with high level of planting in the parks and town centre but with financial and administrative support.

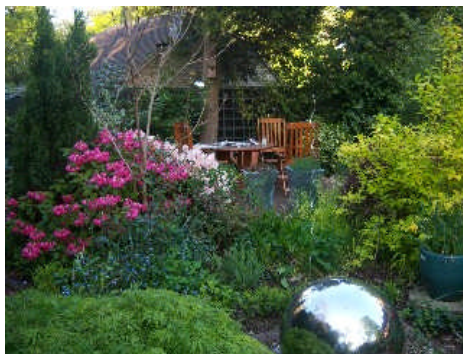
The culmination of everyone's hard work earned the town a High Silver Award, as the RHS judges report quoted:

This first time entry is patently enjoying its achievements, in making this town attractive with its floral schemes and hanging baskets.

The loveliest area of planting was the Cottage Garden on one of the main streets which was vibrant with colour and contained a good choice of plants.

This enthusiastic In Bloom team has made a good effort for its first year of entry. Hopefully it will progress to further developments next year.

Planting projects included beautification of prominent green areas around the town the most eye catching being the Cottage Garden on West Street, as shown on the right. Six large tree planters have been placed in the High Street, the flower beds in Parsons Close Park renovated and new floral arrangements placed around the Flypast Sculpture on the corner of Bridge/West Streets. This was the first time that the Council had participated in the Leighton Buzzard Carnival.



Local gardeners took part in the Leighton Buzzard and Linslade Open Garden Days and volunteers organised two plant stalls to raise funds for the Florence Nightingale Hospice.



Lower schools took part in a competition to plant up the best flower pot and these were used to decorate the Council's Carnival float.

Throughout the summer, the Council and its Officers received many positive comments about how nice the town looked and well done for everyone's hard work.

CEMETERIES

The Council owns and maintains two cemeteries – Old Linslade cemetery by St. Marys Church and the Vandyke Road cemetery. Both of these venues have restricted space available and we have continued our efforts to locate more land for cemeteries within the Parish. To utilise our existing cemeteries we have made Old Linslade Cemetery more open and created a further 30 plots for the burial of ashes. At Vandyke Cemetery we have begun the process of incorporating the old allotment land into the main body of the cemetery. It is hoped that this area will be available for burials in 2012.

Our staff are very proud of the cemeteries and they have received a lot of praise from local residents about the excellent upkeep and appearance of both sites. Memorials are checked on an annual basis by our trained staff to ensure that the Council is fully compliant with Health and Safety matters.

ALLOTMENTS

There has been a substantial growth in the number of residents who wish to rent an allotment. As of 31 March 2011 we have 98 people on our waiting list for an allotment.

The Council provide allotments at two sites - Weston Avenue and Alwins Field. At Weston Avenue, there are 95 full sized plots which due to demand we are gradually dividing into half plots. There are at present 146 half plots. At Alwins Field, there are 26 full size allotments out of which we have to date created 45 half plots. We are further hoping to extend the Alwins Field allotment site to allow the creation of a further 24 half plots.

Following last year's request from allotment holders for greater security, the Council provided a new fence between the Weston Avenue allotments and Pages Field. A financial contribution towards the cost of the fence was made by allotment holders. Efficiency savings and a lesser environmental impact were made by partly reusing surplus fencing removed from the riverside in Parson's Close.

In 2010-2011, allotment holders participated in the Anglia in Bloom campaign, with an open day held for members of the public to visit the allotments and awards given for the "best-kept" and "most improved" allotments.

In the last year the Council has taken steps to improve communications with allotment holders, with the introduction of a quarterly newsletter and meetings with allotment holders. These meetings have been proved to be a very useful and valuable means of two way communications between the Town Council and its allotment holders. It is hoped that allotment holders will gradually take more responsibility for the general upkeep of the allotment sites and work with all those who rent a site to ensure that the proper procedures and rules are followed.

COMMUNITY EVENTS

Music in the Park



The annual programme of band concerts in the park is proving to be as popular as ever with the average audience numbers now being well over a 100. Bands from the three counties region continue to provide a vast range of music which appeals to all ages. New bands are always requesting to play in the park and over the past few years, at least one new band has been introduced in to the annual summer programme.

This means the Council can no longer offer all bands a date in the summer but we do guarantee that all bands will be invited to play over a two year period.

Refreshments continue to be provided by local organisations who appreciate the opportunity to raise much needed funds. Leighton Buzzard Day Centre continues to provide the use of its facilities for free.

It has been noted that the increase in audience numbers means that the Town Council can no longer guarantee that seating will be available. It would be worth investing in more chairs although storage would be an issue.

The evening concert took place on Sunday 8 August and its popularity is increasing each year. Local band Fenny Stompers Jazz provided the entertainment and, although the evening wasn't barmy it stayed dry!

Linslade Canal Festival



This popular and successful one day event is attracting exhibitors and demonstrators from around the country. Last year, over 120 businesses, ranging from craft stalls, rural craft demonstrators, exhibitors, local charities and businesses attended the event. This is a significant increase from its inception in 2003 when 30 stalls attended. A vast range of goods are now available for sale as well as promotion and publicity opportunities for local support groups and organisations, and the chance to fundraise by local charities.

It is still difficult to access the number of visitors attending the event but it has been noted that many are staying longer on site.

Positive feedback from visitors and exhibitors commends the Council for providing the right mix of entertainment and attractions as well as a wonderful setting.

Rural Craft demonstrators and local Birds of Bray continue to be very popular attractions and activities on the canal are also greatly enjoyed by visitors with many attending the event just for the opportunity of taking a canal boat trip.

Narrow boats continue to travel down from the North to support this one day event and though we receive persistent requests each year to make it a two day event, they all continue to return the following year. There has also been an increase in the number of commercial boats attending with the Fudge Boat completely selling out!

The event would not be a success without the continued support of Town Council staff, Greensand Trust, Rotary Club of Leighton Linslade, local schools and numerous volunteers.

Living History Day



This annual history heritage event celebrated its 10th year in October with a look back in time. The theme was based on a timeline featuring snapshots from various periods in history. There were opportunities to explore and learn some fascinating facts about our history including World War II, Victorian England and the English Civil War. Attractions included medieval jousting, an audience with Queen Victoria, vintage vehicles, Magic Lantern Shows, music and entertainment. The event attracted hundreds of visitors to the town centre many stayed for several hours which must have been encouraging for local businesses.

Again, this event would not be as successful as it is without the continued support of Council staff and local volunteers.

Senior Citizens' Film Club

The Town Council continues to work in partnership with Leighton Buzzard Theatre to provide a programme of films for senior residents of Leighton Linlade. Membership is free and has over 1400 members which is continually growing, noticeably more so with the recent showings of Oscar winning films. Majority of the showings are very well attended, with waiting lists for additional showings of films such as "The Kings Speech".

The ticket price which includes light refreshments was slightly increased in January to £2.56 due to additional vat but still provides excellent value for money.

Senior Citizens' Tea Dances

Attendance numbers have declined slightly with an average of 30 people turning up for the monthly, afternoon dances. The Christmas dance and the annual themed dance which last year celebrated Valentines Day always attract a much larger turnout.

The Town Council continues to hire Bell Close Sports Association Clubroom for the tea dances being the most suitable venue within the town centre it also has the best floor! Arthur and Pat Matterson continue to provide dance instruction.

This year's themed dance will be a Gala Dance on Thursday 28 April to celebrate the Royal Wedding.

Ticket prices will rise from April 2011 to £3.20.

TEENAGE ADVICE AND INFORMATION CENTRE

The Teenage Advice and Information Centre is located in Hockliffe Street and open to young people between the ages of 13 – 21 six days a week. During 2010-2011 the Centre had over 8000 visits from 1600 young people. In a time of reduction of services for young people by other authorities and National Government the TACTIC centre is providing a much needed resource for those who require information, assistance and help to overcome their issues. The TACTIC centre has regular visits from the Brook Clinic which offers advice and help with sexual health matters, the Connexions service which assists with a wide variety of issues including homelessness, employment and benefit advice. Other organisations such as the Youth Offending Team, the Princes Trust and various Counselling services use the Centre as a base for their work.

OUR OBJECTIVES

During 2010-2011, the Leisure and Community Committee's objectives are given below together with progress to the end of March 2011.

What we said we would achieve in 2010-2011	What we actually achieved
Parks and Open Spaces	
Master plans for Pages Park and Mentmore Road park.	The proposed master plans for these two parks and Pages Field will give ideas for long-term development options, with the aim of creating welcoming green spaces to appeal to all park users. Stakeholders have been consulted and residents' views on these options will be sought in summer 2011.
New Splash and Play area in Parson's Close.	A tender process early in 2010-2011 led to the appointment of a preferred contractor, Sun Safe

	Play. Various options for the design were put forward for consideration. The Town Council obtained funding from Central Bedfordshire Council (via the Playbuilder fund) and also received a grant from WREN. Public support for the scheme was sought as part of this application process. The new area will be available for the Spring/Summer 2011.
Consider a new refreshment facility and public conveniences in Parson's Close.	Options were considered but it was determined that the Splash and Play facility should be completed before ideas for a refreshment kiosk were progressed further. Repairs to the existing public conveniences were undertaken during the winter months. Options to improve building security and, therefore, enable longer opening hours for the facilities continue to be reviewed.
Review the criteria for use of the Council's sports pavilions and open spaces.	The criteria for use of the Town Council's parks and open spaces were agreed and procedures updated. Criteria for use of the sports pavilions will be reviewed during 2011-2012.
Once the criteria is agreed, delegate to the Town Clerk hiring's for the Council's sports pavilions and open spaces.	The Leisure and Community Committee agreed to delegate to the Town Clerk hiring's for the parks and open spaces, ensuring quicker decisions can be made on events. Delegation of hiring's for the sports pavilions will be reviewed once criteria for hiring's have been reviewed in 2011-2012.
Work with Central Bedfordshire Council to deliver sports facilities at Astral Park, primarily an access road from Johnson Drive.	Despite the Council's best efforts, progress has been slow this year. Central Bedfordshire Council is now leading on this project. A review of the access from Johnson Drive and the options for providing facilities on the park are being carried out.
Work with Central Bedfordshire Council to make available for public use Pratt's Quarry.	Central Bedfordshire Council has now acquired this site and future use is being considered in conjunction with Astral Park.
Young People	
Increase service provision and agency use within TACTIC both with young people and agencies.	A sexual health service is now provided on two days a week
Continue to increase awareness of TACTIC and what it offers.	More contacts have been made with both local Upper Schools
Increase the scope of the Centre and its facilities.	Extra Information Technology has been installed and the garden of the centre is being renovated.
Expand staff knowledge and range of information for young people and agencies.	Targeted information events have been held and all staff have received further training
Work with young people and agencies to look at ways in which TACTIC can expand the services offered.	Ongoing talks with agencies, Social Services, Central Bedfordshire are taking place.
Increase the youth provision within the town, in conjunction with other agencies.	The Centre has kept up to date with the changes that are forecast to occur in youth service provision in 2011-2012
Work alongside IYSS to create a three tier system of communication to strengthen the voice of young people. This will be on a National level, county level and also on a local level.	Staff have worked with the Integrated Youth Support service to ensure a cohesive approach to services for young people in the Parish.

PLANNING COMMITTEE

The Committee comprises eight Town Councillors it was chaired by Councillor George Rolfe. Councillor Ken Sharer was the Vice Chair. Meetings generally take place every three weeks. In the municipal year 2010–2011, the Committee had met on 15 occasions and gave a view on 207 planning applications.

The Planning Committee's task is to consider all planning applications within the Parish; it is also consulted on local plans, proposed listed buildings, conservation areas, tree preservation orders, building preservation orders and waste strategies. The Committee responds to all consultation requests relating to minerals, planning related documents and other relevant statements/proposals emanating from National Government/organisations or other local authorities/organisations.

Formerly known as the Planning and Environment Committee, in 2010-2011 the scope of this Committee changed and became more focussed on planning and development issues only. In addition to the core business of reviewing planning applications, the Planning Committee discussed, or was involved with, a wider range of issues. In particular, the Committee spent some time considering the application by Covanta to build an incinerator at Rookery South Pit, Marston Moretaine and whether to join in on a combined response opposing the application put forward by many surrounding Parish Councils.

OUR OBJECTIVES

During 2010-2011, the Planning Committee's objectives are given below together with progress to the end of March 2011.

What we said we would achieve in 2010-2011	What we actually achieved
For 2010-2011 the Combating Crime Sub-Committee has been dissolved and its work will be undertaken by the Policy and Finance Committee	A new Police Liaison Sub-Committee was set up by Policy and Finance, with two meetings held in October 2010 and in January 2011
The objectives of the new Planning Committee will be to give the view of the Council on any planning application within the Parish and participate in consultations that are applicable to planning and waste issues.	Planning applications were considered at each of the 15 Committee meetings held in 2010-2011.

SUSTAINABLE TRANSPORT COMMITTEE

The Sustainable Transport Committee continued to play an important role in seeking to improve the state of roads and paths within the Parish. It also attempts to ensure that transport infrastructure was in place prior to any future developments.

The Committee comprised of eight Town Councillors and representatives from Central Bedfordshire Council, the Cycling Forum and Bedfordshire Highways. It was chaired by Councillor Alan Brandham. Councillor Ray Berry was the Vice Chair. In the municipal year 2010–2011, the Committee met on four occasions.

The Committee worked with Bedfordshire Highways and Central Bedfordshire Council to find solutions to traffic and parking concerns in a number of the roads close to the railway station which are suffering problems from, it would appear, commuter parking. The Council has also actively been working on gaining improvement to the quality of paths and roads within the Parish. At the specific request of the Town Council the footpaths in Station Road and Plantation Road have been resurfaced. Cut backs on transport funding – both by National Government and Central Bedfordshire Council have had a negative effect on the state of the roads within the parish. The Town Council has begun a detailed survey of roads within the Parish to identify all the repairs that are necessary and it will encourage those responsible for highways to undertake needed repairs at the earliest possible opportunity.

The Committee considered bus transport issues this year, in particular the launch of the new D1 Dash Direct bus service between Sandhills and the Railway Station, as well as liaising with Central Bedfordshire Council and Arriva regarding changes made to the bus service between Leighton-Linslade and Milton Keynes. Regular reports were received from representatives of the Buzzer Bus service and consideration was given to the creation of new bus stops.

Travel by rail continued to be a major topic of discussion throughout the year. The Committee was provided with various facts and figures by London Midland relating to train journeys to and from the town and also received information from Central Bedfordshire Council regarding the implementation of the Station Travel Plan which is overseen by a multi-agency group – Get on Track.

The Council continued to work with the Leighton-Linslade Cycling Forum on improving cycling facilities and making this form of transport both safer and more attractive.

GOCYCLE



The Town Development Committee has dealt with all matters relating to the GoCycle Project – a joint Cycling England/Central Bedfordshire Council project which seeks to encourage the use of cycling. The project was staffed by a team of four, three of whom were employees of the Town Council; their work is managed by Central Bedfordshire Council. The GoCycle Project provides over £1.5 million towards cycle training and infrastructure. Cycle training has been made available, specific parking has been provided at many new locations, all the main parks will have a new cycling feature and the team has hosted numerous cycling opportunities and events. Leighton-Linslade is just one of twenty towns throughout the country who have been awarded GoCycling Project status. It is hoped that this project will also link in with the developing Station Travel Plan to the benefit of all transport users within. The GoCycle website is www.gocycleleightonlinslade.org

OUR OBJECTIVES

During 2010-2011, the Sustainable Transport Committee's objectives are given below together with progress to the end of March 2011.

What we said we would achieve in 2010-2011	What we actually achieved
A continuation of the success of the Leighton-Linslade Go-Cycling Project and to support, if funds are provided, the project after its formal end date of March 2011.	The new Cycle Hut, bikeability training, establishment of a business cycle user group, cycle parking at various locations within the town, cycle play track at Oakbank School.
Improve facilities and services for bus users	D1 Dash Direct service launched with increasing numbers of passengers using this route. Homes in Sandhills to have equipment installed to give real-time bus schedule information to residents.
Monitor the state of local roads and footpaths and seek remedial action if required	Footpath repairs requested on Plantation Road, Old Road and Station Road. The Committee requested that Central Bedfordshire Council work to resolve the ongoing issue of flooding at the junction of Leighton Road and Wing Road.
Seek proposals that will reduce the problems caused by "rat running" in certain areas of the town (e.g. Bassett Road)	The Town Council remains committed to the principles of having all roads within the town centre area to be classified as 20 mph. Negotiations with Central Bedfordshire have continued and it is hoped that new traffic calming measures and improvements will be made in the Clarence Road/Churchill Road and Bassett Road areas.
Support the development of a Parish-wide parking strategy.	Central Bedfordshire Council has worked on developing a county-wide parking strategy during 2010-2011. Once finalised, this would then naturally lead to the creation of a Parish-wide parking strategy for Leighton Buzzard and Linslade.

TOWN DEVELOPMENT COMMITTEE

The Committee comprised of eight Town Councillors and 15 representatives from local businesses, voluntary organisations, societies and special interest groups. It was chaired by Councillor David Hopkin. In the municipal year 2010–2011, the Committee met on four occasions.

The Town Development Committee was instrumental in developing, updating and putting into action the 'Big Plan' for Leighton Buzzard and Linslade. This detailed forward planning document was produced following a lengthy and comprehensive public consultation and provided a detailed action plan for the Parish. This document, which is viewed very positively by Central Bedfordshire Council, will now be used as an example for other towns and parishes to follow when developing their own long-term aims. Big Plan II will be in place for at least seven years and it will be the focus of the work of the Town Council during that period. The plan was made available at the Annual Parish meeting held on 21 March 2011.

One of the major achievements this year has been that Central Bedfordshire Council has undertaken the agreed Planning Development Briefs for the town centres, to include land between the River Ouzel and the Grand Union Canal and land to the south side of the High Street. Public consultation took place on the proposals for these sites during January and February 2011.

The Town Development Committee also continued to work closely with local community groups such as "I♥LB" on major town events such as the Christmas Shopping Weekend. A new addition to the events calendar this year was the Summer Festival, held in June 2010.

The Town Development Committee has successfully negotiated with Central Bedfordshire Council to allow the creation in May 2011 of the Leighton-Linslade Partnership Committee which will comprise of elected representatives of both the Town and Central Bedfordshire Council. It is hoped that this Committee will be able to take over the work of the Town Development Committee and the Leighton Buzzard and Linslade Town Centres Management Committee. Funds for its work will be provided by both the Town Council and Central Bedfordshire Council.

HEALTH SERVICES SUB-COMMITTEE

The Health Services Sub-Committee continued to work with NHS Bedfordshire and local GP Practices throughout 2010-2011 with regard to improved health services and the establishment of a new community hospital.

TASK AND FINISH GROUPS

The Town Development Committee was responsible for the creation and terms of reference of Task and Finish Groups that exist to progress/deliver specific proposals in the 'Big Plan'. During 2010–2011, three small Task and Finish Groups existed – Tourism, Business Forum and Town Centres Management.

Tourism Task and Finish Group

The Group met on two occasions to review the tourism strategy and invited members of local community groups to attend, to brainstorm ideas for developing tourism within Leighton Buzzard and Linslade. Participation was also sought from Central Bedfordshire Council.

As the current strategy period is 2015, it was felt that the work of this Task and Finish Group was not a priority and should be deferred.

The Town Council is keen to encourage visitors to the town and contributes advertising material to the Coach Drivers' Club Handbook.

The Council works with Central Bedfordshire Council's Economic Development Team to encourage tourism in the town and was influential in working with the Bedford Archives Office to put Leighton Buzzard on the 'Hands on History' British Broadcasting Corporation's television series.

Business Forum Task and Finish Group

This Group met on two occasions and sought input from Central Bedfordshire Council on their county-wide initiatives to attract new businesses into Bedfordshire and to improve links with existing businesses in the area.

A Skills and Training Fair was held in May 2010 which was supported with a financial contribution from Central Bedfordshire Council and advisory support from their Economic Growth and Regeneration Team. The aim of the Fair was to bring together organisations under one roof, to aid the unemployed of the community to highlight their skills and offer guidance in discovering training needs, thus developing a new confidence in their approach to get back into the workplace.

An Executive Forum was organised in conjunction with Central Bedfordshire Council and Central Bedfordshire College. Ten people from the region enrolled on the forum and completed six workshops, which covered topics such as CV writing, interview techniques, leadership, consultancy and influencing skills.

Town Centres Management Task and Finish Group

This Group met on three occasions to discuss the best options to manage the town centres of Leighton Buzzard and Linslade. Councillors felt that the current Town Centres Management Committee, constituted under Central Bedfordshire Council, had become less effective than previously, with only two meetings held in 2010-2011 and no CBC budget available to spend. A proposal to form a new Leighton-Linslade Partnership Committee, to replace both the existing Town Centres Management Committee and the Town Development Committee, was put forward to the Town Council and to Central Bedfordshire Council in January 2011. This new Committee will meet for the first time in June 2011 and it is hoped that a stronger partnership with Central Bedfordshire Council will be achieved by the new joint Committee.

OUR OBJECTIVES

During 2010-2011, the Committee's objectives are given below together with progress to the end of March 2011.

What we said we would achieve in 2010-2011	What we actually achieved
Continuation of the Parish-wide strategy to revisit and revise the Big Plan	Exhibition and public consultation events held throughout the year, each addressing a different aspect of the Big Plan. A final two-day public consultation event was held in October 2010. All findings have been written up into an updated Plan.
Publish the revised Big Plan.	Published by March 2011.
Participate in the Development Brief processes for land to the South of the High Street and land between the canal and the River Ouzel.	In early 2011, the Committee participated in the public consultation regarding ideas for these two key areas. Central Bedfordshire Council will now review all the feedback obtained during the consultation process and start developing firmer plans for the sites.
Create and start to deliver a new Tourism strategy.	This Tourism strategy was reviewed but not reissued as the existing strategy continues until

	2015.
Improve links with local businesses, with the possible creation of a Business Forum.	The Business Forum Task and Finish Group met twice and were updated by Central Bedfordshire Council on initiatives to improve links with local businesses. A Skills and Training Fair organised by the Town Council. An Executive Forum was organised in conjunction with Central Bedfordshire Council and Central Bedfordshire College.
Encourage capacity building to improve residents' quality of life.	The Council has worked with Voluntary and Community Action is establishing the first Community House in the town on Sandhills.
Encompass the "localism" and "Big Society" Government agenda.	The Government's new Localism Bill will help to devolve responsibility to residents. The Council sought new ways to devolve responsibility to residents e.g. looking after notice boards. The Council has used the Community Payback workers for many projects around the town e.g. painting, path edging, collecting leaves, litter picking.

**Further Information about the Council's activities is available from The White House, Hockliffe Street, Leighton Buzzard, Bedfordshire LU7 1HD.
Telephone : 01525 631920**

Website: www.leightonlinlade-tc.gov.uk

This is part of the Council's policy of providing full information about its activities.

LEIGHTON-LINSLADE TOWN COUNCIL

Councillors 2010-2011

Mayor

Gordon Perham (2010-2011)

Councillors

Ray Berry

David Bowater

Alan Brandham

David Breen

Adam Fahn

Mark Freeman

Susan Freeman

Anne Guess

David Hopkin

Gordon Perham

David Price

Kevin Pughe

George Rolfe

Maureen Rolfe

Sharon Roselman (until 5 February 2011)

Ashley Ryder (until 27 March 2011)

Brian Sadler

Patricia Sadler

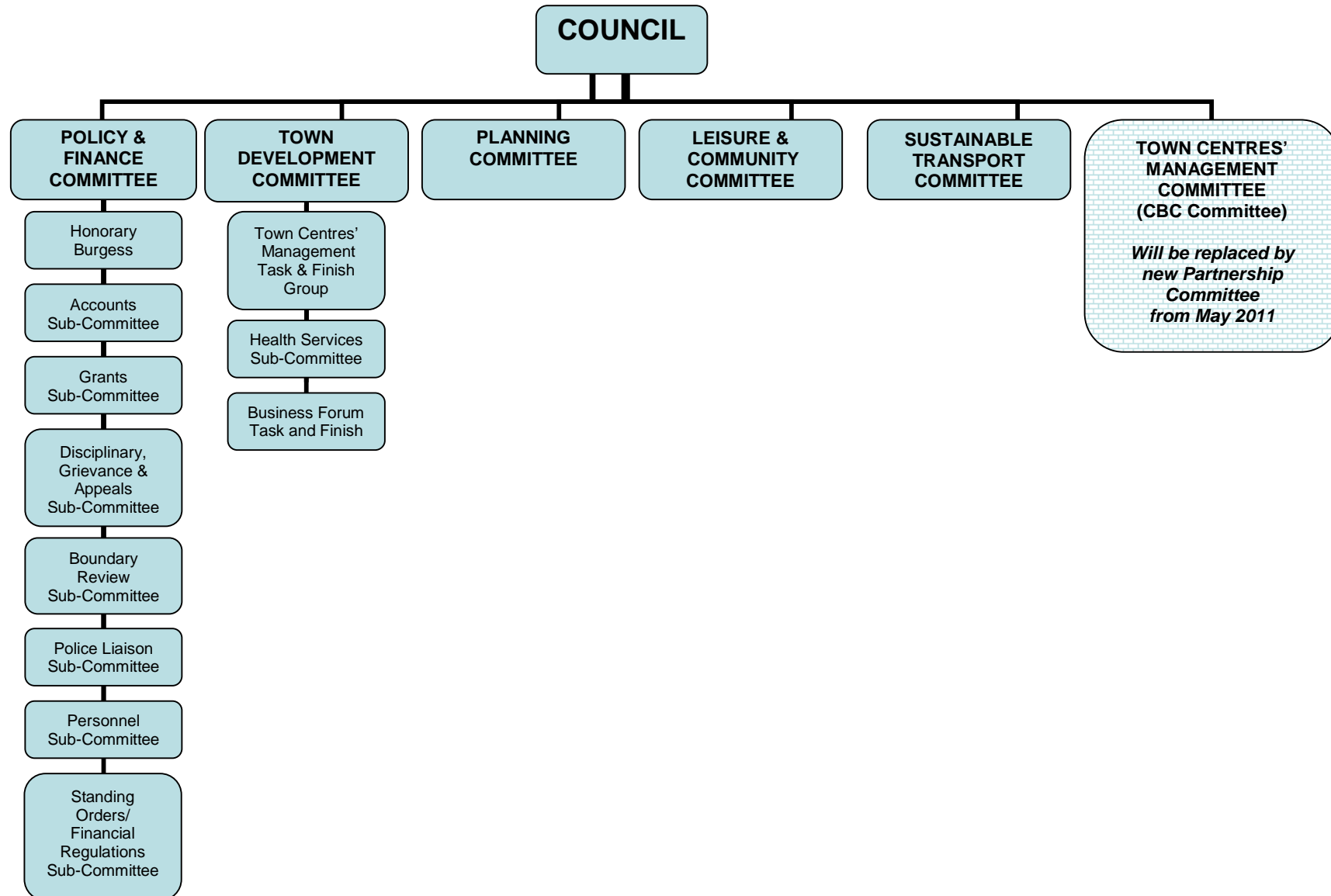
Ken Sharer

Peter Snelling

Town Clerk

Pat Kingsnorth

LEIGHTON-LINSLADE TOWN COUNCIL COMMITTEE STRUCTURE 2010-2011



LEIGHTON-LINSLADE TOWN COUNCIL MEETINGS 2010-2011

All meetings are held in The White House and commence at 1930 hours, unless otherwise stated

May 2010

Mon 03 **Bank Holiday**
 Mon 10 Accounts Sub Committee (1600)
 Wed 12 Planning & Environment (1900)
 Wed 12 Joint Planning & Environment and
 Leisure & Community Committee
 Mon 17 **COUNCIL ANNUAL MEETING**
 Mon 24 Town Development Committee
 Mon 31 **Bank Holiday**

June 2010

Mon 07 Leisure & Community Committee
 Wed 09 Planning
 Wed 09 Grievance Appeal Sub Com (1600)
 Mon 14 Accounts Sub-Committee (1600)
 Mon 14 Sustainable Transport Committee
 Mon 21 Policy & Finance Committee
 Mon 28 **COUNCIL**
 Tues 29 Tourism Task and Finish Group (1400)
 Wed 30 Planning

July 2010

Thurs 01 Boundary Review Sub-Com. (1000)
 Mon 05 Town Development Committee
 Mon 12 Leisure & Community Committee
 Mon 19 Town Centre Mgmt T&F (1400)
 Mon 19 Grants Sub-Committee
 Tue 20 Health Services Sub Committee (1900)
 Wed 21 Tourism Task and Finish Group (1130)

August 2010

Thurs 05 Town Centres Task and Finish (1400)
 Mon 16 Accounts Sub-Committee (1600)
 Wed 18 Planning Committee
 Wed 25 Standing Orders Sub-Committee (0900)
 Mon 30 **Bank Holiday**
 Tue 31 Standing Orders Sub-Committee (1400)

September 2010

Wed 08 Planning
 Thurs 09 Local Parishes (1900)
 Mon 13 Sustainable Transport Committee
 Mon 20 Policy & Finance
 Mon 27 **COUNCIL**
 Wed 29 Planning

October 2010

Wed 06 Business Forum T&F (1000)
 Mon 11 Town Development Committee
 Mon 18 Police Liaison Sub-Committee
 Wed 20 Planning Committee
 Fri 22 Town Centres Mgmt T&F (0900)
 Mon 25 Leisure & Community Committee

November 2010

Mon 01 Town Development Committee
 Mon 08 Sustainable Transport Committee
 Wed 10 Planning Committee
 Mon 15 Accounts Sub-Committee (1600)
 Tue 16 Honorary Burgess Sub-Committee (0930)

Tue 16 Health Services (1900)
 Thur 18 Local Parishes (1900)
 Mon 22 Personnel Sub-Committee

December 2010

Wed 01 Planning Committee
 Thurs 09 Grievance Appeal Sub Com (1730)
 Mon 13 Accounts Sub Committee (1600)
 Mon 13 Grants Sub Committee
 Wed 22 Planning Committee
 Mon 27 **Bank Holiday**

January 2011

Mon 03 **Bank Holiday**
 Mon 10 Personnel Sub-Committee (1830)
 Mon 10 Policy and Finance Committee
 Mon 17 **COUNCIL**
 Wed 19 Planning Committee
 Thur 27 Sustainable Transport Committee
 Mon 31 Police Liaison Sub-Committee

February 2011

Mon 07 Town Development Committee
 Wed 09 Planning Committee
 Mon 14 Accounts Sub Committee (1600)
 Mon 14 Leisure and Community Committee
 Thur 24 Local Parishes (1900)
 Mon 28 Personnel Sub-Committee

March 2011

Wed 02 Planning Committee
 Mon 07 Sustainable Transport Committee
 Tues 15 Police Liaison Sub-Committee
 Mon 21 PARISH MEETING
 Wed 23 Planning Committee
 Fri 25 Health Services Sub-Committee (1900)
 Mon 28 Grants Sub-Committee

April 2011

Mon 04 Policy and Finance Committee
 Mon 11 Accounts Sub Committee (1600)
 Wed 13 Planning Committee
 Mon 18 **COUNCIL**
 Mon 25 **Bank Holiday**

May 2011

Mon 02 **Bank Holiday**
 Mon 16 **COUNCIL ANNUAL MEETING**
 Mon 23 **COUNCIL ANNUAL MEETING (adjourned)**

LEIGHTON-LINSLADE TOWN COUNCIL
STAFF AS AT 31 MARCH 2011

APPENDIX 4

